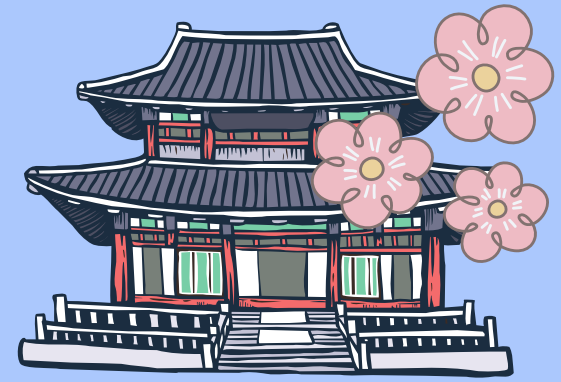


DH asia webinar

Linked Data for Learning: Designing a Semantic Portal for Cultural Heritage Materials



new date



November 27 (Wed)
2:00 pm GMT+9



Zoom Registration:
<https://bit.ly/3UNx3KE>



Lyndsey Twining

PhD, Cultural Informatics, Academy of Korean Studies

about the talk

“From the European Data Model and the CIDOC-CRM to the Linked Art and Research Space initiatives, the application of linked data to cultural heritage contexts is nothing new. However, these models center the needs of heritage management and research, without fully considering the perspective of students, educators, and creators in the discovery and utilization of digital materials on cultural heritage. By applying approaches from the practice of heritage interpretation, I developed a digital curation model that brings together not only cultural heritage and its context, but also related reference materials and participatory activities. And, based on this model, I built an online portal using Semantic MediaWiki (a free, open-source software) that allows related yet scattered digital resources to be easily linked together within a semantic context. Although the portal focuses on English-language materials related to Korean cultural heritage, the design can be applied to other contexts. I hope that this project, though still a work in progress, may spark discussions on how linked data can be used to improve the inclusivity and accessibility of cultural heritage information within an educational and creative context.” --- Lyndsey Twining